



กรมอนามัย

สำนักงานผู้สูงอายุ

2019 Workshop on Ageing Population and Health : The Longitudinal Study and the Role of Population Collaborators in Community based Care for Older Persons

**Dr.Kitti Larpsombatsiri, Director, Bureau of Elderly Health,
Department of Health, Ministry of Public Health, Thailand**

12 December 2019

Outline

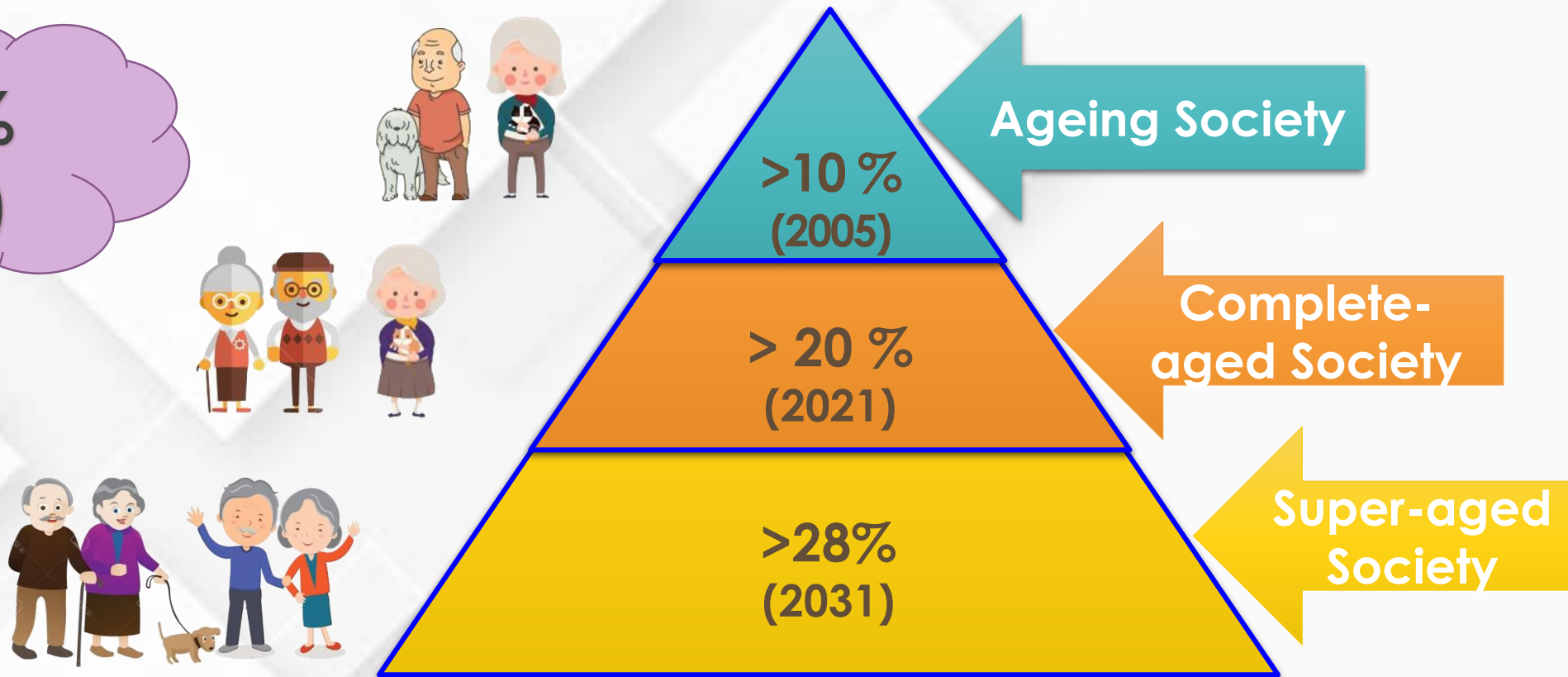
- **Situation**
- **Community-based Care
for Older Persons**
- **The Role of Population Collaborators in Community based Care
for Older Persons**
- **National Policy : Long Term Care**
- **Health Systems**



Situation

Thailand Rapid Ageing

17.4 %
(2019)



Activities	2016-2017	2017-2018	2018-2019	Note
No. of implemented Sub-district LTC. (Sub-districts)	1,569	2,140	6,282	86.59% of total sub-districts (7,255)
Trained Care Manager. (persons)	2,714	4,139	5,990	12,843
Trained Caregiver. (persons)	27,696	22,450	27,707	77,853
Dependent Older Persons Received LTC services under Care Plan. (persons)	67,023	99,495	180,821	180,821
Older Persons change status from dependence to semi-dependence.			1.66% Of total dependence (2,992 cases)	-
Older Persons change status from semi-dependence to independence.			4.42% Of total Semi-dependence (7,962 cases)	-

Source: Long Term Care 3C Program Register for Care Manager, Caregiver and Care plan.

Health Workforce of Ageing Population.

Primary Health Care Teams
For all age groups

10,668
Community Health Promotion Centers

1,170
Multidisciplinary
Care Teams

1,040,000
Health Volunteers



LTC Teams
For dependent
old age groups

12,843
Care Managers

77,853
Caregivers

Health Literacy



**Active Ageing
, Comorbid Diseases**

- Health Promotion
- Diseased Prevention & control



**Acute illness
with capacity to reverse**

- Acute Care
- Intermediate Care
(Intensive Rehabilitation)



**Chronic
Deterioration**

**(Preventive)
Long Term Care**



End of life

End of life Care

- **The Role of Population Collaborators
in Community based Care for Older Persons.**
- **National Policy : Long Term Care**

National Agenda on Aged Society (2018)

Goal: Thai Elderly to be Active Ageing

Target groups: Older People, Youth and Working Age Groups



2 Key Measures: 6 Sustainable (6S) and 4 Change (4C)

6 Sustainable : Improving quality of life of older people and all generations

- **S1 : Establish System of Welfare and Social Protection for Older Adults (MSDHS)**
- **S2 : Promote Elder Employment and Sustainable Income (MOL)**
- **S3 : Develop Health System for Aged Society (MOPH)**
- **S4 : Modify Housing and Public Spaces for Elder Safety (MOI)**
- **S5 : Set-up Time Bank System (MSDHS)**
- **S6 : Educate Young Generation for Preparation in All Aspects (MOE)**



National Agenda on Aged Society

Main Responsible Agencies

- 1.Ministry of Social Development and Human Security
- 2.Ministry of Public Health
- 3.Ministry of Culture
- 4.Ministry of Labour
- 5.Ministry of Interior
- 6.Ministry of Education

4 Change : Improving Capacity to achieve public sector management 4.0

- C1 : Recognize Aged Society as National Agenda (MSDHS)
- C2 : Revise Laws and Regulations to Support Elder Employment (MOJ/MSDHS)
- C3 : Reform Data System to facilitate policy and implementation on ageing issues
- C4 : Invent Innovation on minimizing inequality in aged society (M-Culture)

National Agenda "Aged Society" 2019-2021



6

Active Ageing (Healthy, Security, Participation)

Sustainable



4

Change

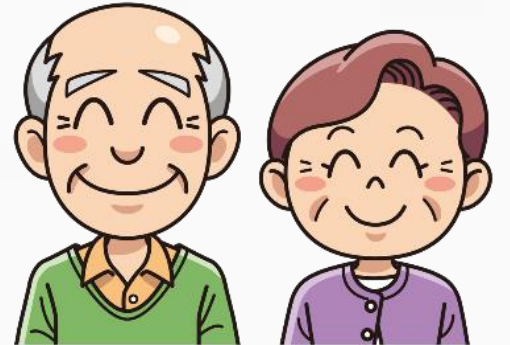
National Policy : Long Term Care



National Policy : Long Term Care

Long Term Care

- Develop Long Term Care model, since 2016
- Training Personnel (Care manager, Caregiver, Community caregiver)
- Develop data system (For registration, report, reimbursement)





7 Criteria of sub-district Model on Long-term care

- | | |
|---|--|
| 1 | Having elderly data classified into 3 groups according to ADL assessment |
| 2 | Having quality elderly club |
| 3 | Having volunteer to take care of the elderly in community |
| 4 | Having good system of Home Health Care |
| 5 | Having system to take care of dependent elderly |
| 6 | Having dental health promotion and prevention in sub-district. |
| 7 | Having sub-district Committee for manage care of dependent elderly |

National Policy For Healthy Aging

Integration & Collaboration : 4 Ministries



Ministry of Public Health



Ministry of Interior



**Ministry of Social
Development and Human
Security**



Ministry of Education

Policy on Active and Healthy Ageing (3s)

1. **Social** (MSDHS)

Families and communities
as a strong institution.

2. **Strong (Health)** , (MoPH)

The Older Adults have good health

3. **Security** , (DLA)

The welfare system and support services
with quality standards access.



Healthy Ageing Initiatives



**Strong
(Health)**



Universal Health Care



Healthy Ageing



Comprehensive Health Care

- Physical Check-up
- Health Promotion
- Geriatric Clinic
- Long – Term Care

**Community
Proactive
Programs**



**Health
Settings**



Security



- ❖ Age – Friendly Communities
- ❖ Universal Old Age Pension (600 – 1,000 Baht)
- ❖ Disability Pension (800 Baht)
- ❖ Social Insurance
- ❖ Government Pension
- ❖ National Savings Fund





Alone

Social



Participation

Connection



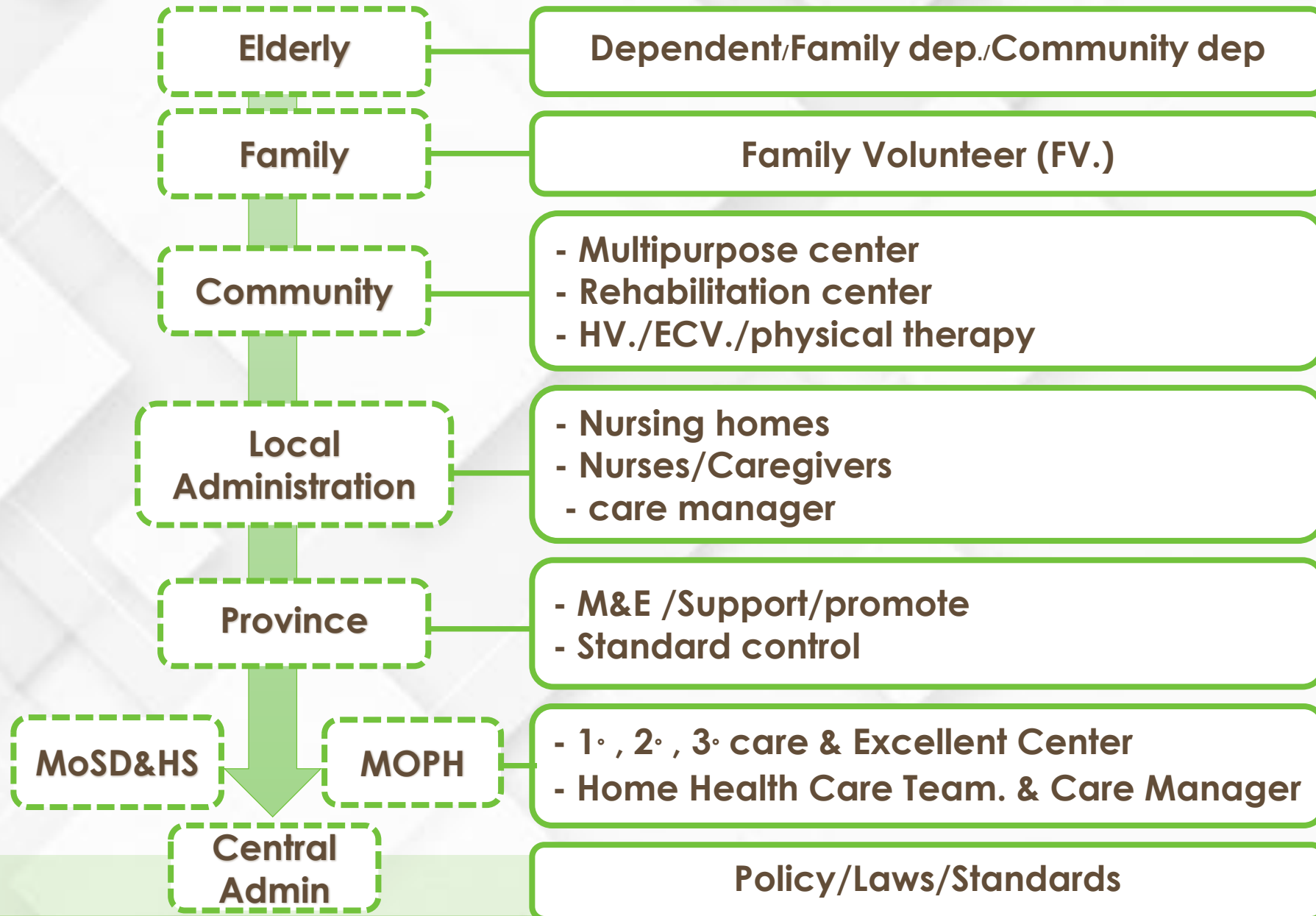
Supportive System

- Degeneration
- Depression
- Dementia
- Dependence
- Death

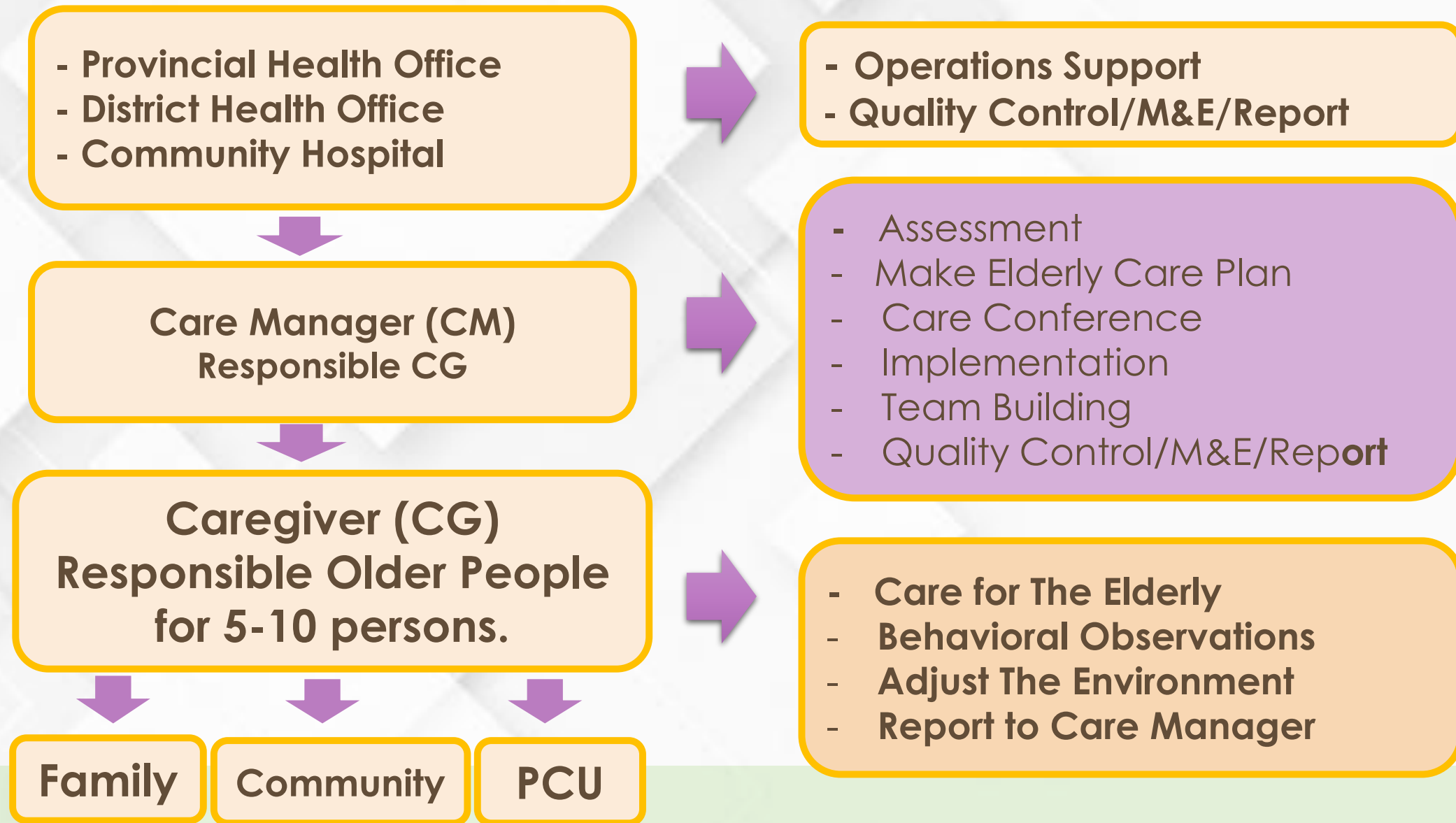
- Older Adults Clubs
- Center for the development quality of life in the elderly
- Health Promotion Temple



Long Term Care Services



Functional Structure of Care Manager



Care personnel



Family Care Team



Care Manager



Caregiver



Family Volunteers



- Consult/Give an advice
- Joint plan of care for the Older Adults



- Assessment
- Make Older Adults Care Plan
- CM 1 person : 35 – 40 Older Adults



- Assessment/Care for the Older Adults
- Care of the Dependent Group
- CG 1 person : 5 – 10 Older Adults .



- Care for Family Members.

Category

(Modified WHO 6 building block by MOPH)

1. Service delivery



- Sub-district Model on Long-term care (DoH)
- 5 dimensional happiness as Health, Recreation ,Integrity ,Cognition, Peacefulness (DMH)
- Comprehensive Geriatric Screening (DHS)

2. Health workforce



- Training Personnel on Care Manager 70 hrs., Caregiver 70 hrs. and 420 hrs. . (DoH)
- Training Basic Courses for taking care the elderly patient for Nurses , Geriatric Medicine.(DHS)

3. Health Referral information system/network



- Long Term Care 3C Program Register for Care Manager, Caregiver, Care plan (DoH)
- Health Data Center, 10 key Geriatric Screening Items(MoPH)
- Ageing Health Data , Comprehensive Geriatric Screening (DHS)
- Long term care fund (NHSO)

4. Forming data of revenue and cost/financing



- Long term care fund (NHSO)
- Allowance management information system, welfare (DLA)
- System of Welfare and Social Protection for Elderly (MSDHS)



5. Patient and family/participate



- Consult and Plan with Patient and Family by Healthcare Provider (MoPH)
- Training Home Program with Patient and Family by Healthcare Provider, Family Care Team (MoPH)

6. Leadership Governance /Policy/Others *if needed



- The Act on the Elderly, 2003
- The 2nd National Plan on the Elderly, 2002-2021 (Revised 2009)
- The National Agenda on Aged Society, since 2018



Public Health Service Model.

Excellent Center

- Specialized Services
- R&D
- Training personnel
- Services

Provincial Hospital

- Tertiary care
- Training personnel

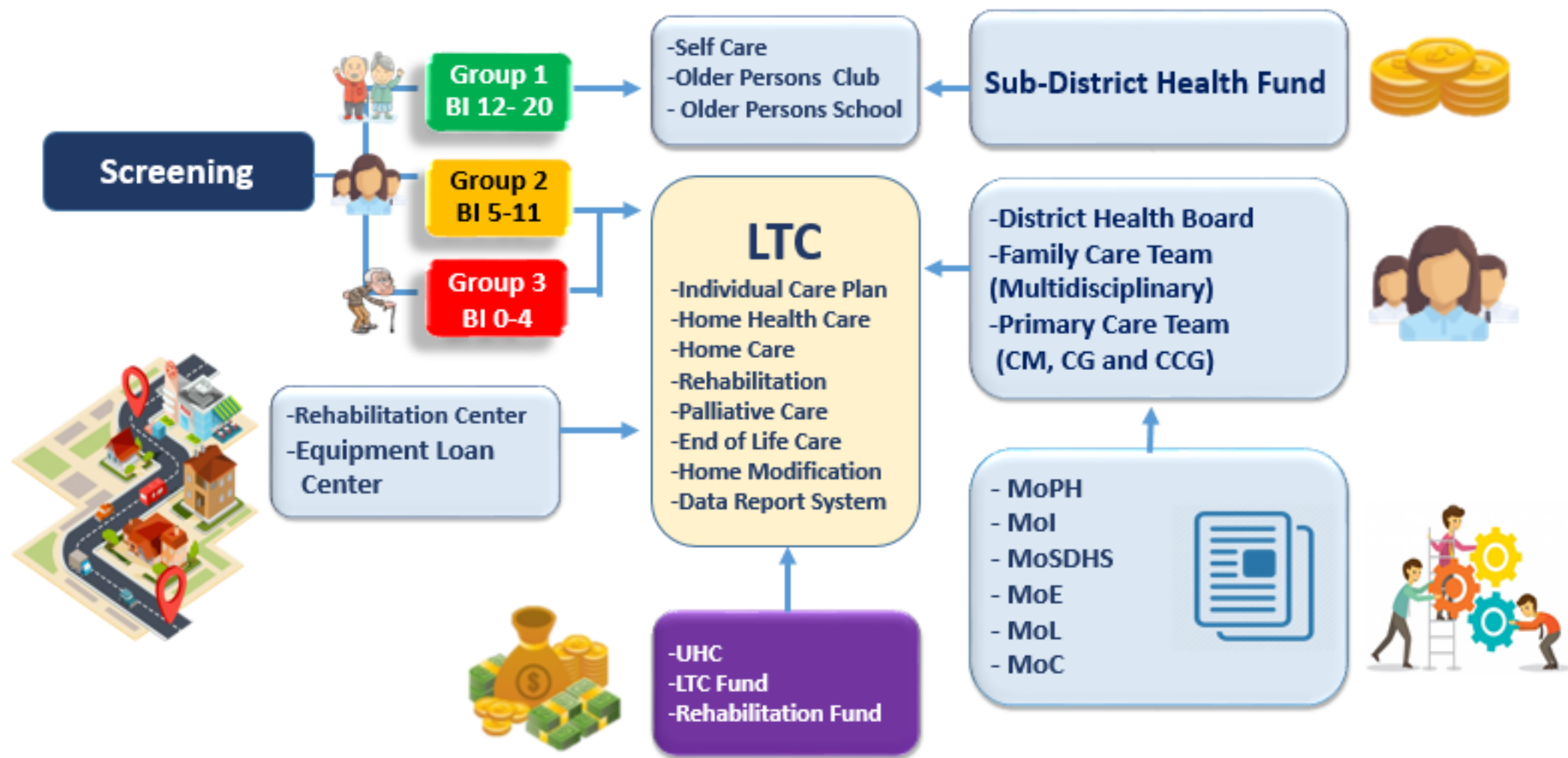
District Hospital

- Secondary care
- Training Family Volunteer, people
- Intermediate Care
- Home Health Care

Health center

- Primary Care in Community
- Care Manager (Case Management)
- Home Health Care

Long Term Care Model



Source: Bureau of Elderly Health , Department of Health, Ministry of Public Health.



Thank you for your attention