



MENTAL HEALTH: AN OVERVIEW & CHALLENGES IN AGEING SOCIETY

MARTIN VANDENDYCK

TECHNICAL LEAD, MENTAL HEALTH
AND SUBSTANCE USE

DIVISION OF PROGRAMMES FOR
DISEASE CONTROL (DDC)

WORLD HEALTH ORGANIZATION
REGIONAL OFFICE FOR THE
WESTERN PACIFIC

MANILA, PHILIPPINES

DEMENTIA

A public health threat



Majority of people who will develop dementia will be in **low- and middle-income countries**

2015



US\$818 billion:
estimated costs to
society in 2015

2030



US\$2 trillion



Nearly 10 million new cases every year

One every 3 seconds

50 million people worldwide

Set to triple by 2050

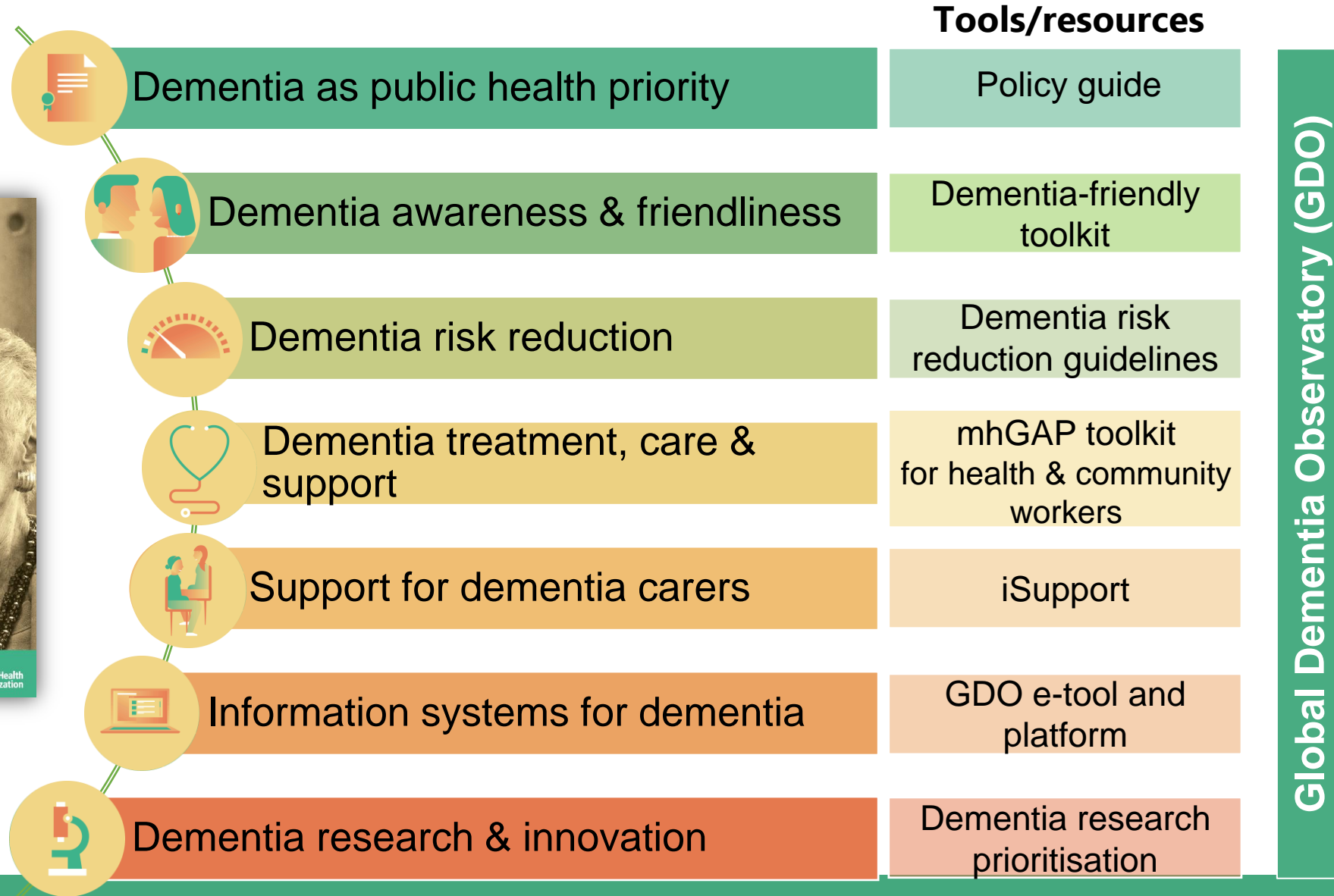
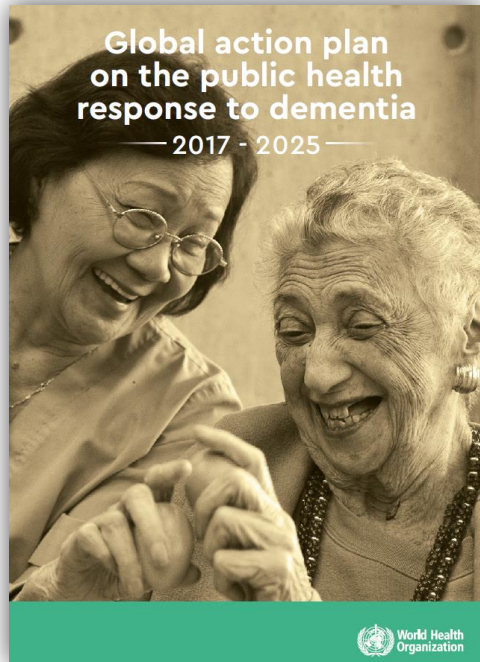


Proposed country actions to support the implementation of the global dementia action plan

Global targets for 2025						
75% Member States have national plans	100% Member States have awareness raising campaigns 50% have DFIs	Member States reach NCD targets	50% Member States reach at least 50% diagnostic rate	75% Member States provide carer training and support	50% Member States collect and report on key dementia information	Double research output
PUBLIC HEALTH PRIORITY	AWARENESS & FRIENDLINESS	RISK REDUCTION	DIAGNOSIS, TREATMENT & CARE	SUPPORT FOR CARERS	INFORMATION SYSTEMS	RESEARCH & INNOVATION
<div><div>National dementia plan</div><div>Legal frameworks</div><div>Financial resources</div></div>	<div><div>Awareness raising campaigns</div><div>Dementia-friendly initiatives</div></div>	<div><div>Media campaign on risk reduction</div><div>Link to other NCD programmes</div><div>Risk reduction training for primary care staff</div></div>	<div><div>Integrated, person-centred, care from diagnosis to death</div><div>Train workforce</div><div>Strengthen primary care & community-based services</div></div>	<div><div>Train workforce in managing carer stress</div><div>Strengthen carer training, education & support</div></div>	<div><div>Include dementia indicators in HMIS</div><div>Collect and use key dementia data</div></div>	<div><div>National dementia research agenda</div><div>Invest in research & capacity building</div><div>Foster technology & innovation</div></div>

WHO’s Global Dementia Observatory (GDO): the **global monitoring** and **accountability mechanism**

WHO activities to support countries by the 7 action areas

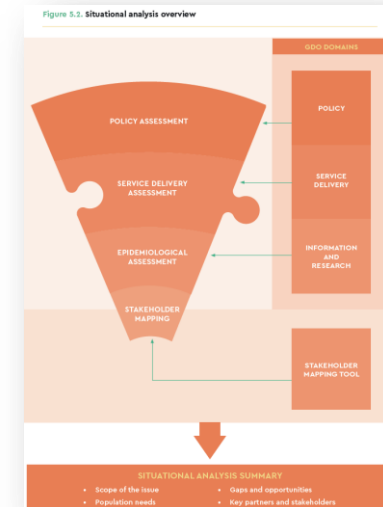




Towards a dementia plan : a WHO guide

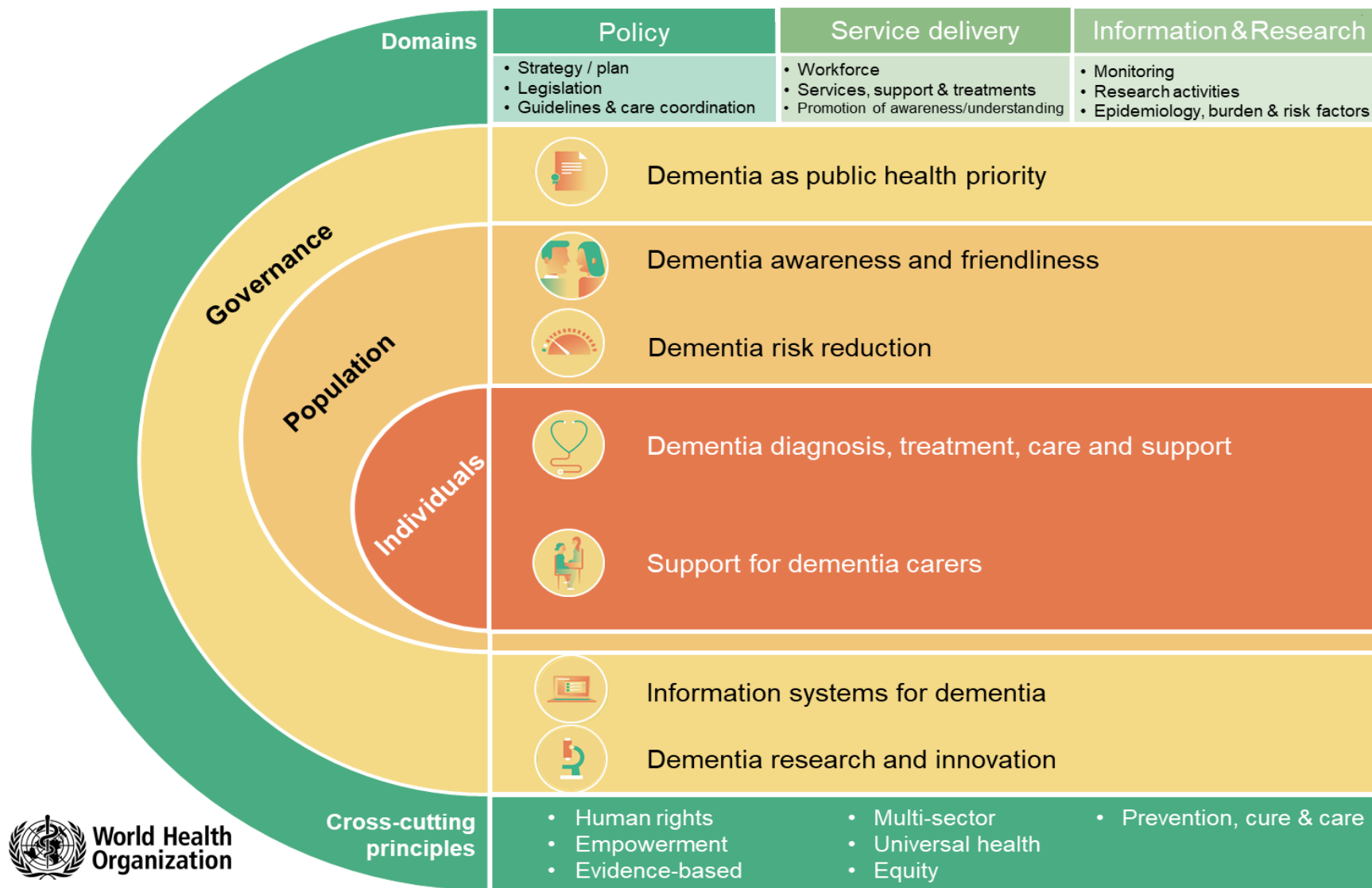
http://www.who.int/mental_health/neurology/dementia/policy_guidance/en/

- A step-by-step guide to creating a national dementia plan





The Global Dementia Observatory Framework

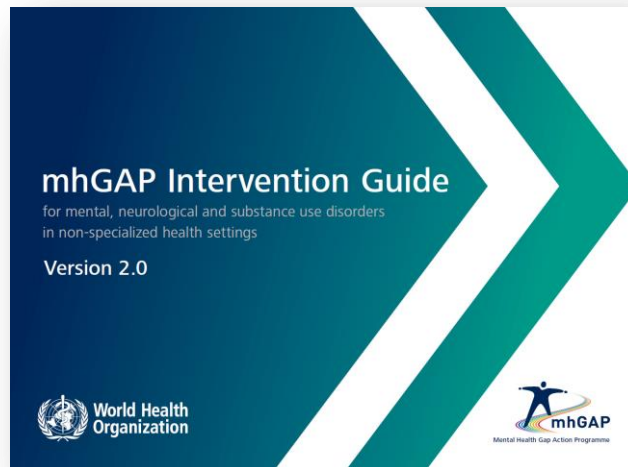




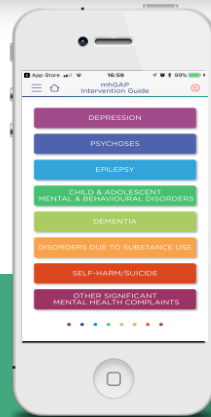
mhGAP dementia module and other tools

http://www.who.int/mental_health/mhgap/mhGAP_intervention_guide_02/en/

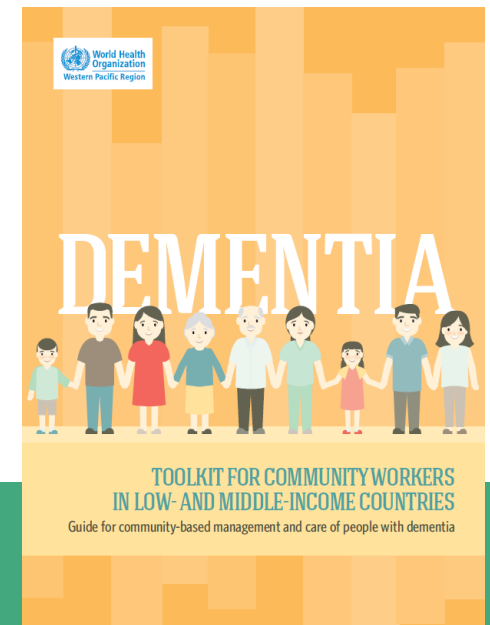
- Evidence-based guidelines for diagnosis, treatment and management of dementia in non-specialist settings



Also available
as app



- Training package
- Ops manual
- Community toolkit
- WPRO dementia toolkit



DEMENTIA



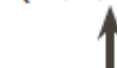
TOOLKIT FOR COMMUNITYWORKERS IN LOW- AND MIDDLE-INCOME COUNTRIES

Guide for community-based management and care of people with dementia

What can community workers do?

Overview

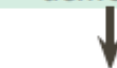
Secondary care
(if available)



Primary care



People with
dementia



Informal care



Social care

EARLY DETECTION
AND TREATMENT

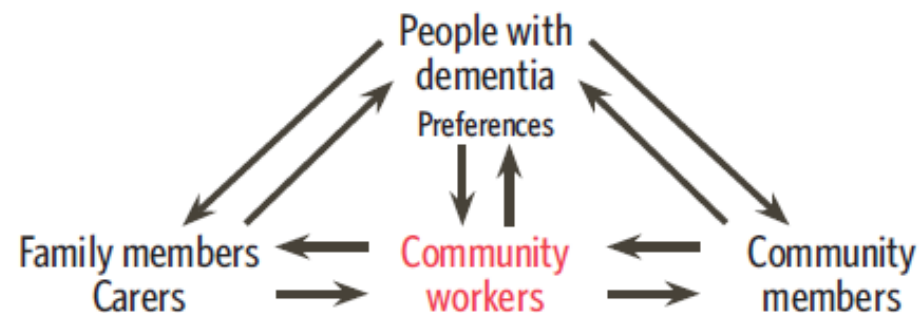
Early signs and
symptoms / onset of
dementia

MANAGEMENT
AND CARE

Risks of comorbidities /
behavioural and
psychological symptoms
of dementia

PALLIATIVE
(END OF LIFE) CARE

End of life

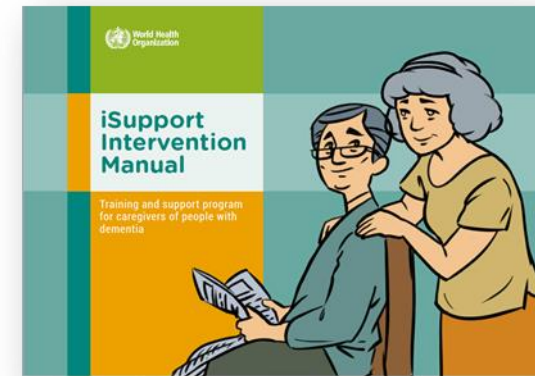
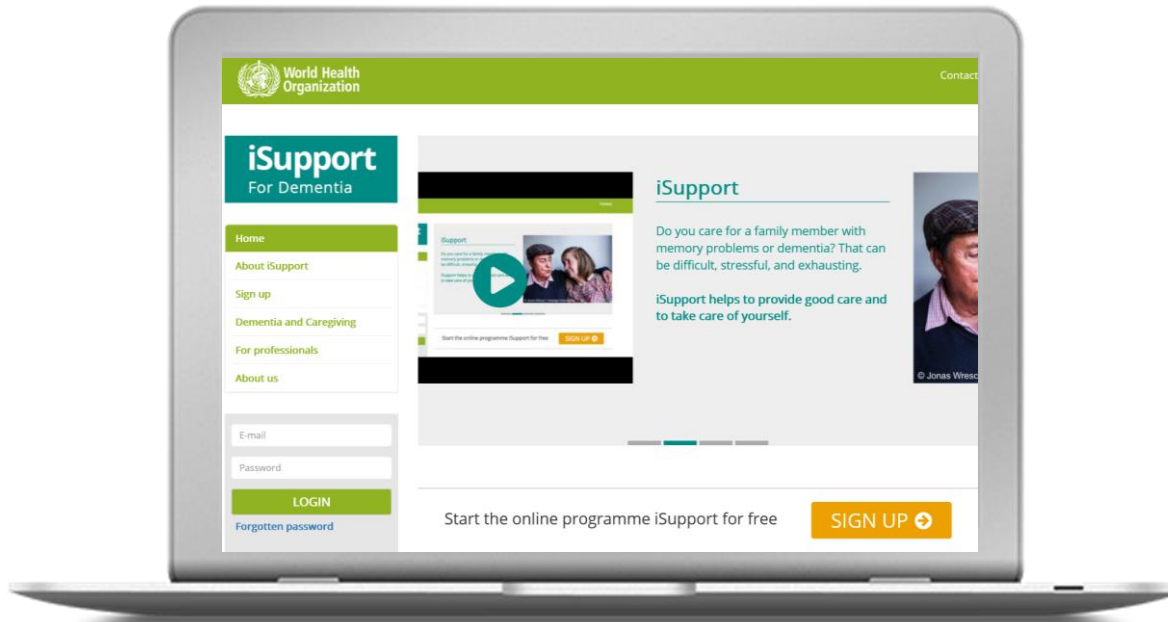




iSupport – online training for carers of people with dementia

www.iSupportfordementia.org

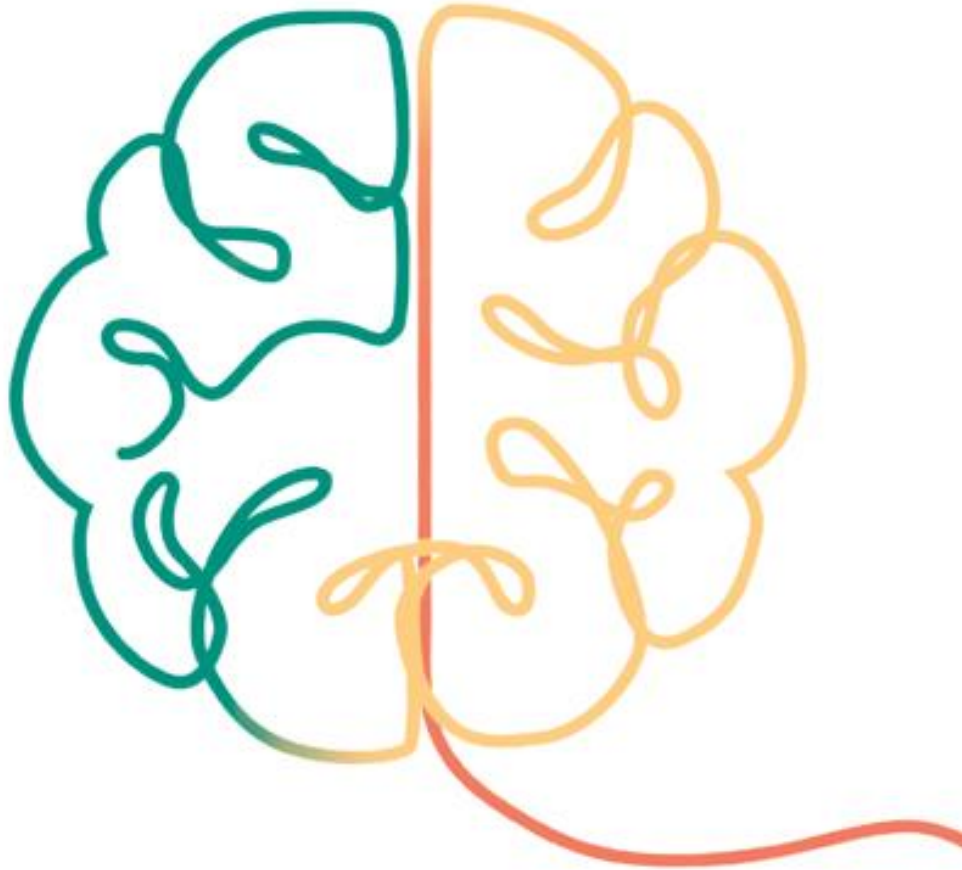
- In 5 interactive modules, dementia carers learn:
 - What is dementia
 - How to be a carer
 - How to look after themselves
 - How to provide everyday care and
 - How to manage behaviour changes



*Hardcopy manual
now available !*

RISK REDUCTION OF COGNITIVE DECLINE AND DEMENTIA

WHO GUIDELINES

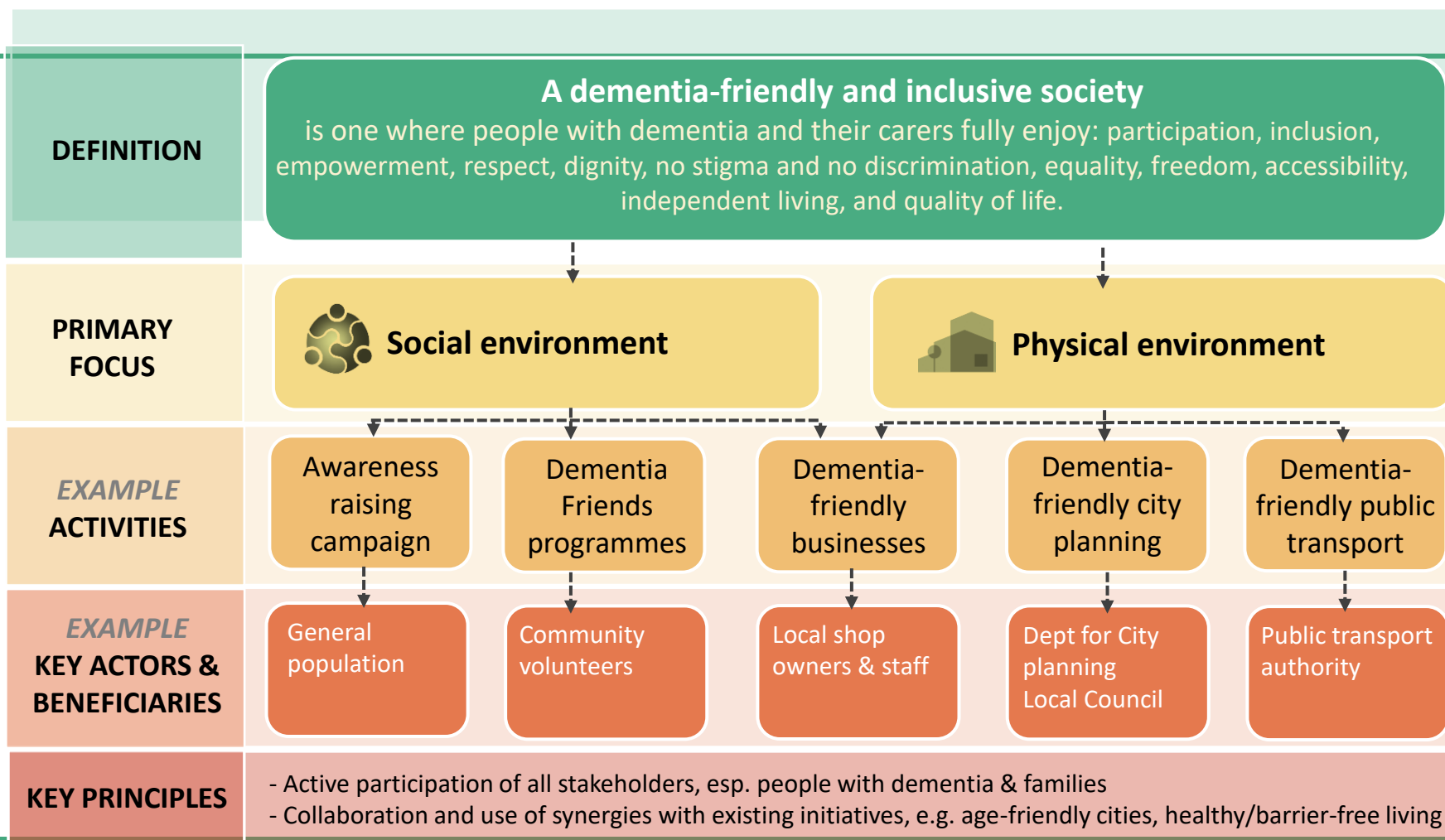


- Launched in May 2019
- Modifiable risk factors (i.e. lifestyle factors and medical conditions) are linked to dementia risk and shared with other NCDs
- By reducing these 20-30% of dementia cases could be prevented
- The guidelines provide information about what policy-makers, health-care providers and patients should do to reduce dementia risk.



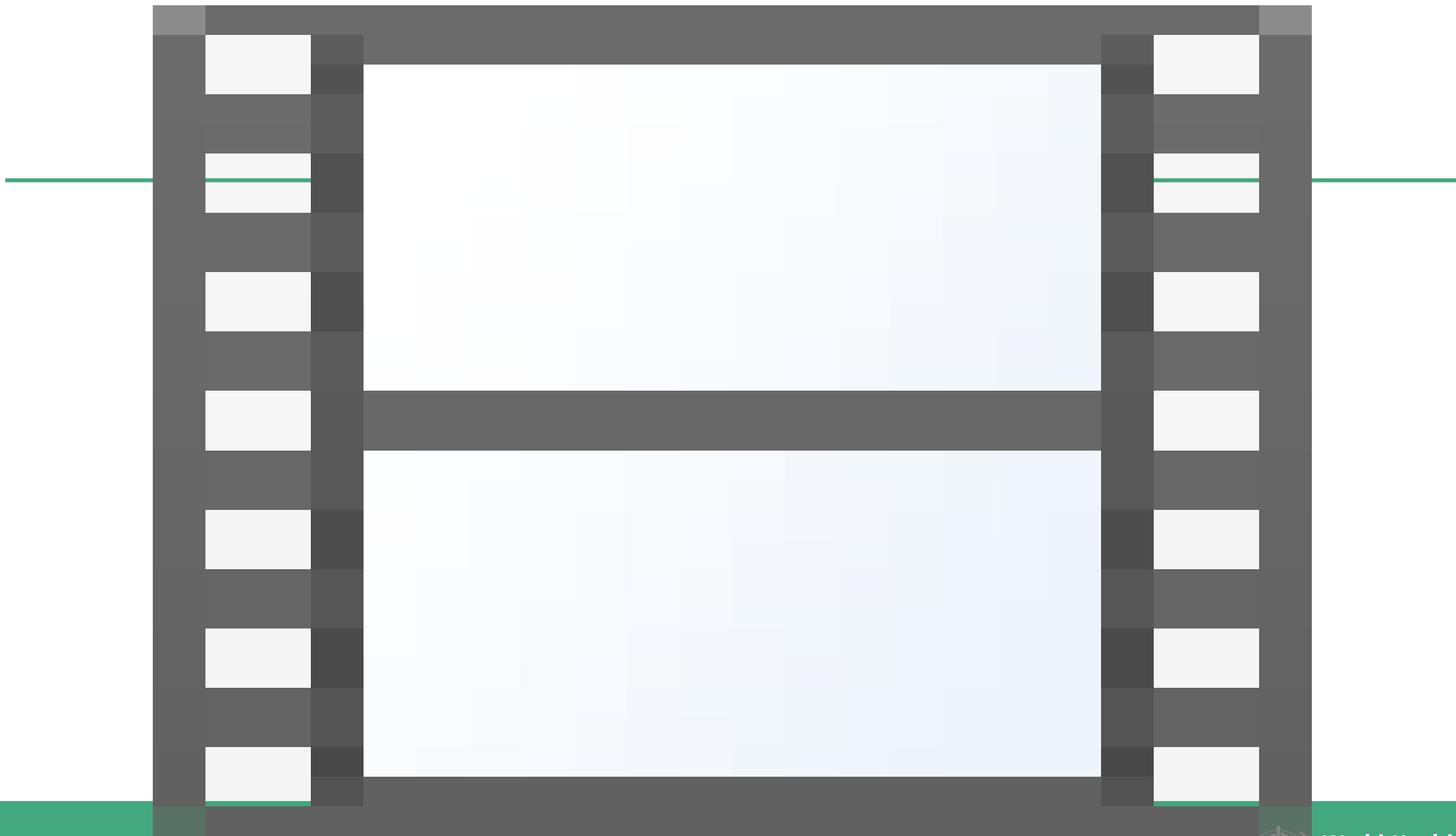
Towards a dementia-inclusive society: a WHO toolkit

Framework of the toolkit

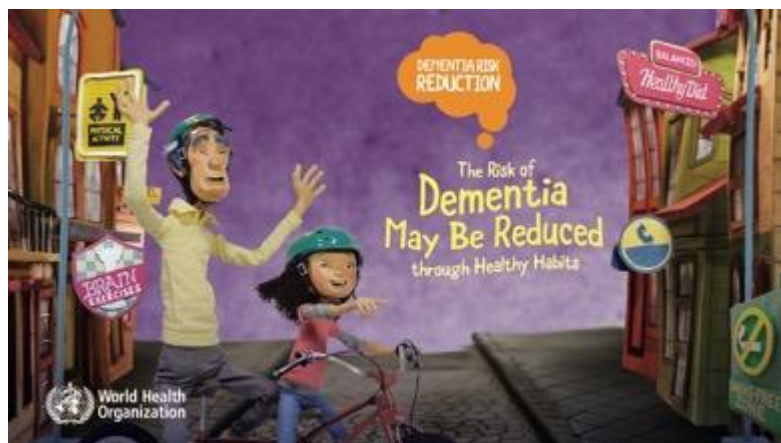
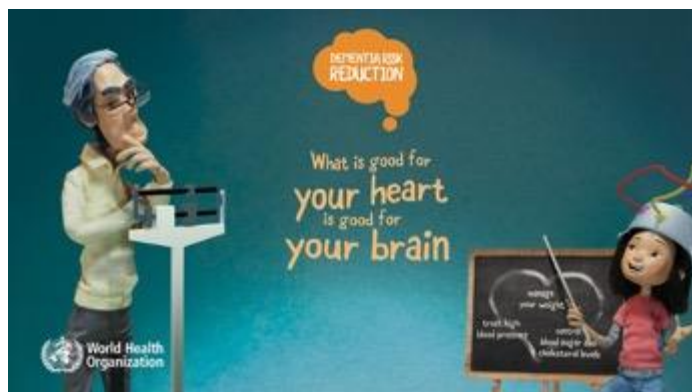


MONITORING & EVALUATION

*In collaboration with AlzSoc UK, ADI, DAI, DH UK, MHLW Japan
Supported by Department of Health UK*



World Health
Organization



THANK YOU!

